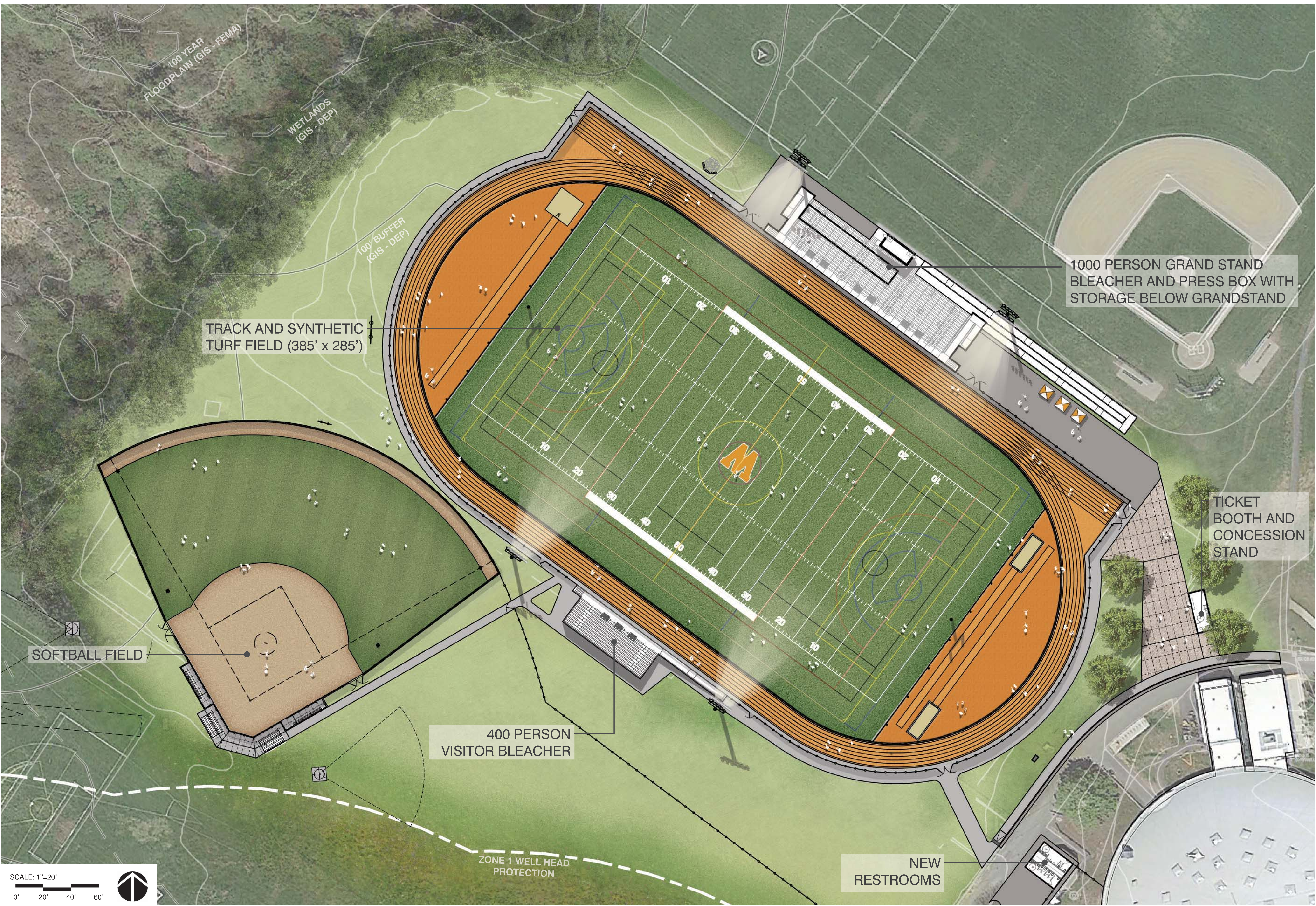


OVERALL PLAN
IMPROVEMENTS TO WAYLAND HIGH SCHOOL ATHLETIC FACILITIES

AUGUST 2018





TRACK AND SYNTHETIC TURF FIELD (385' x 285')

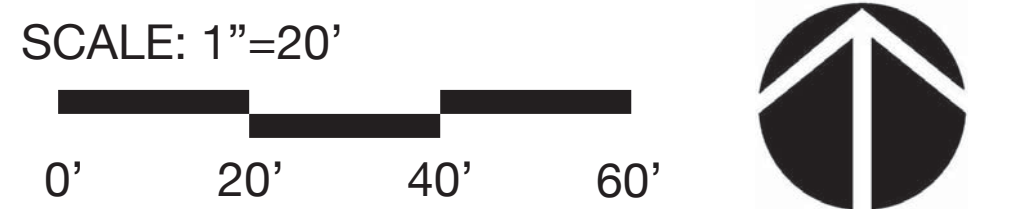
1000 PERSON GRAND STAND BLEACHER AND PRESS BOX WITH STORAGE BELOW GRANDSTAND

TICKET BOOTH AND CONCESSION STAND

SOFTBALL FIELD

400 PERSON VISITOR BLEACHER

NEW RESTROOMS



ZONE 1 WELL HEAD PROTECTION

100 YEAR FLOODPLAIN (GIS - FEMA)

WETLANDS (GIS - DEP)

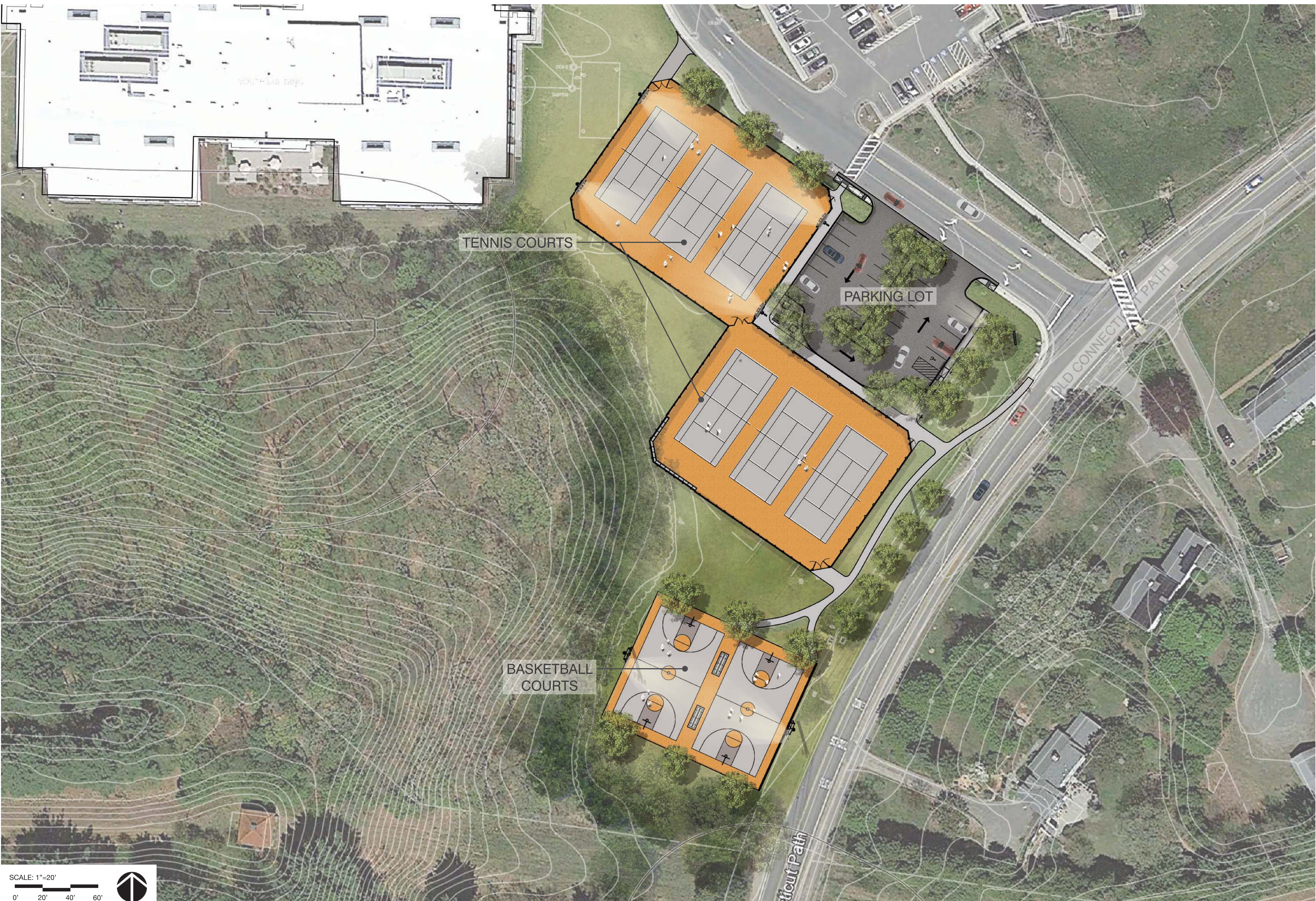
100' BUFFER (GIS - DEP)

NORTH CAMPUS PLAN

IMPROVEMENTS TO WAYLAND HIGH SCHOOL ATHLETIC FACILITIES

AUGUST 2018





SCALE: 1"=20'
0' 20' 40' 60'

SOUTH CAMPUS PLAN

IMPROVEMENTS TO WAYLAND HIGH SCHOOL ATHLETIC FACILITIES

AUGUST 2018

